



# Comprehensive Transit Service Analysis

## Advisory Committee Meeting #2

November 4, 2014

**N** NELSON  
NYGAARD  
**URS**  
**A S G** PLANNING

**CRCOG** CAPITOL REGION  
COUNCIL OF GOVERNMENTS  
Working together for a better region.

# Meeting Agenda

---

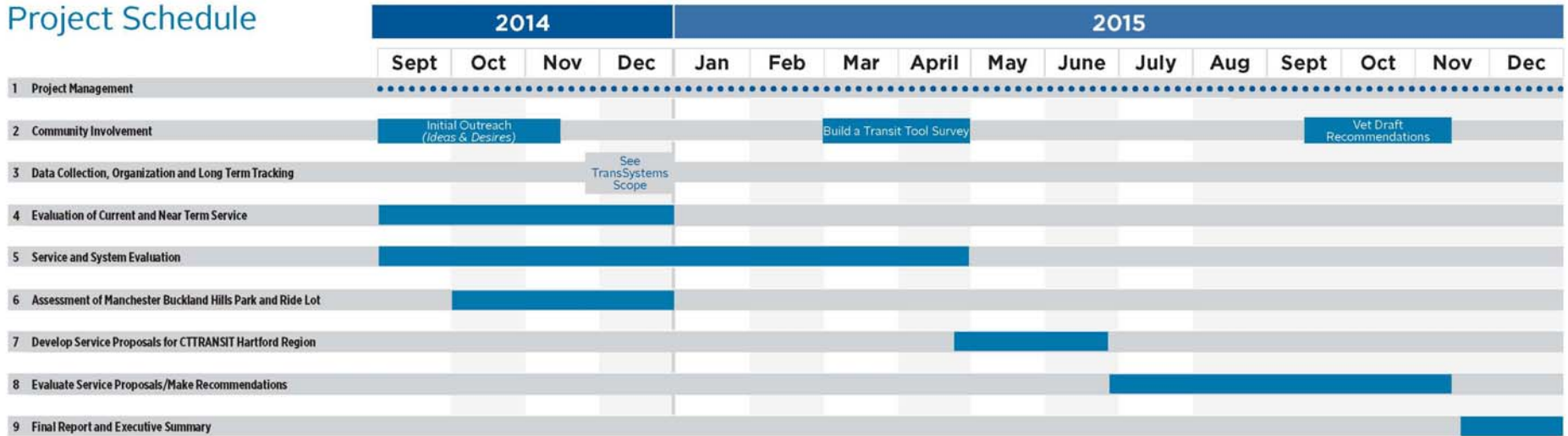
- **Welcome and Introductions**
  - Overview of Meeting Activities
  - Short Project Update
  - Study Tour of *Fastrak* facility and downtown alignment
- **Project Update**
- **Next Steps for Project Team**



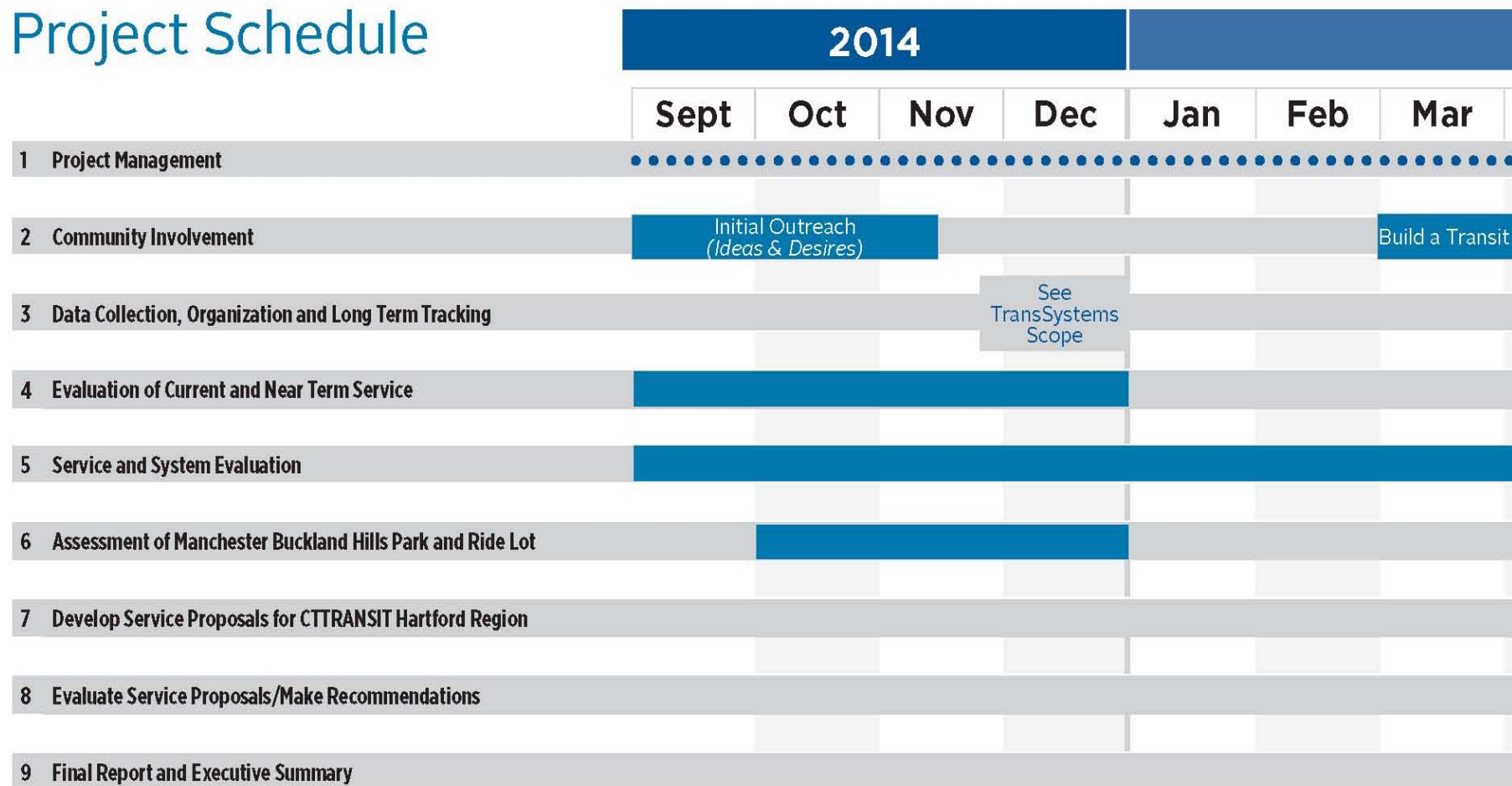


# Project Update

# Project Schedule

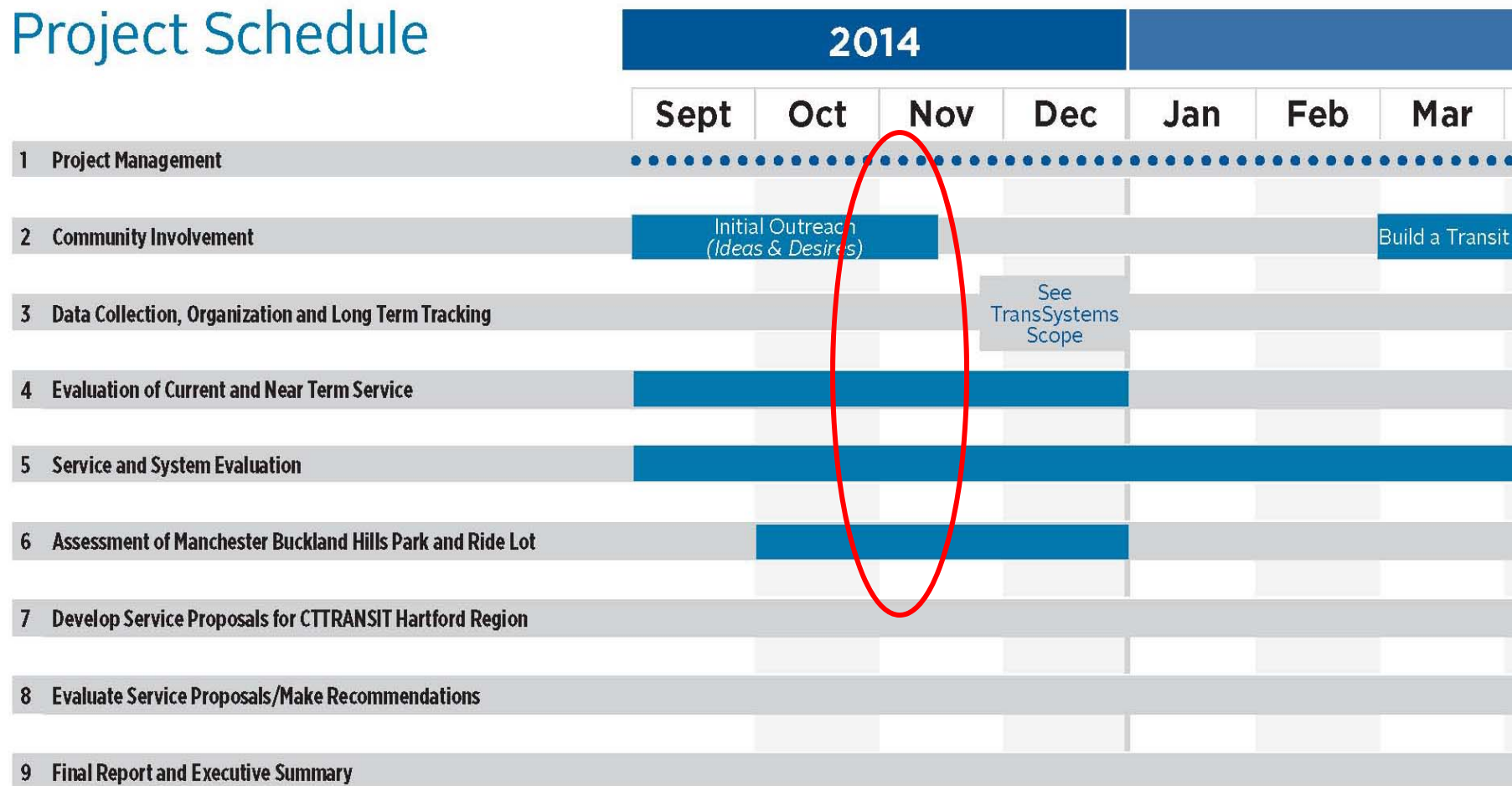


# Project Schedule



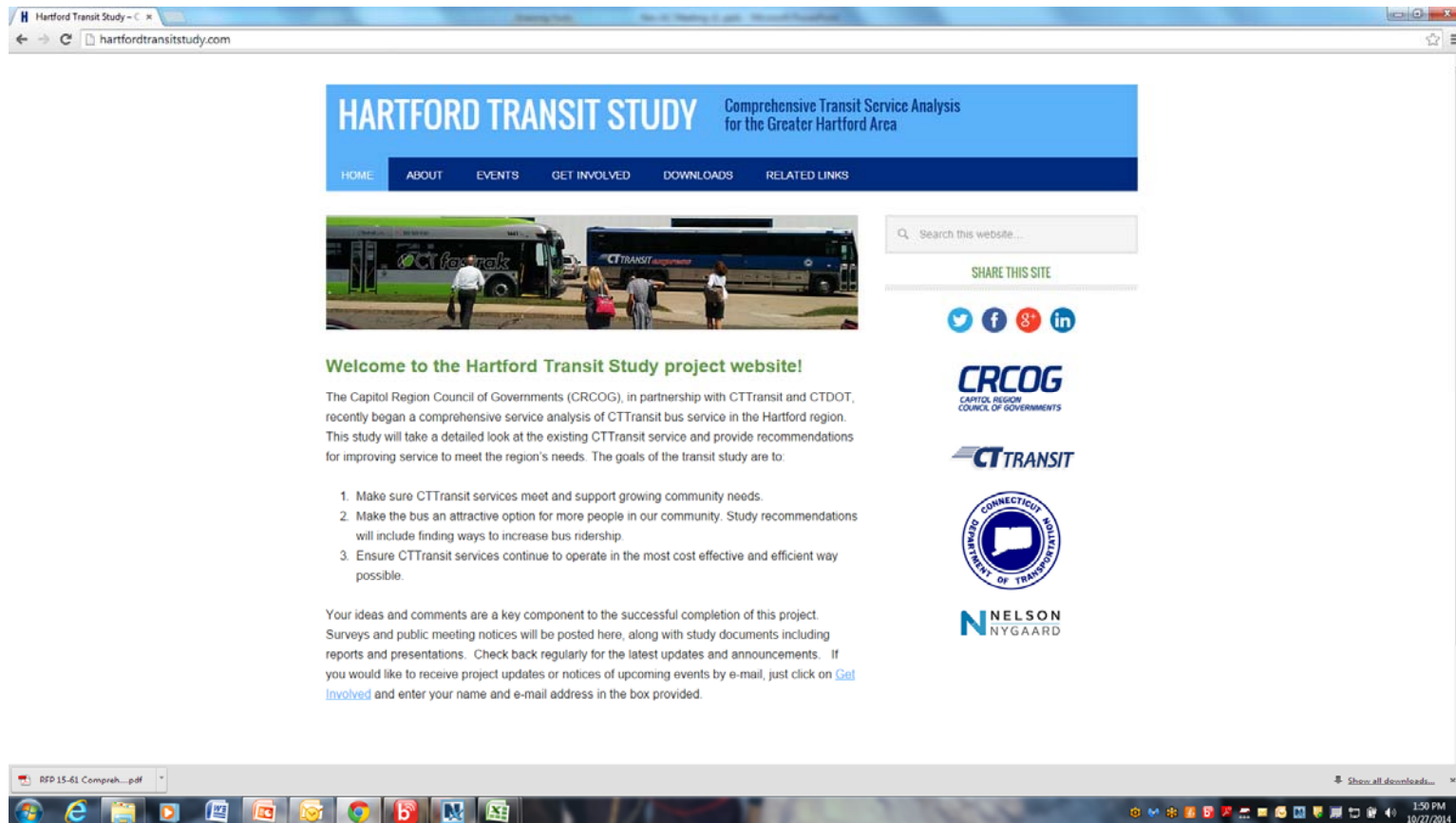


# Project Schedule



# Public Involvement

Website is live: <http://hartfordtransitstudy.com/>



# Public Involvement

---

## ■ Stakeholder Interviews

- Held meeting with CTTransit drivers
- Completed nine stakeholders interviews (12 individuals)
  - Combination of in-person and by phone
  - Five remaining
  - Draft report in December 2014

## ■ Focus groups

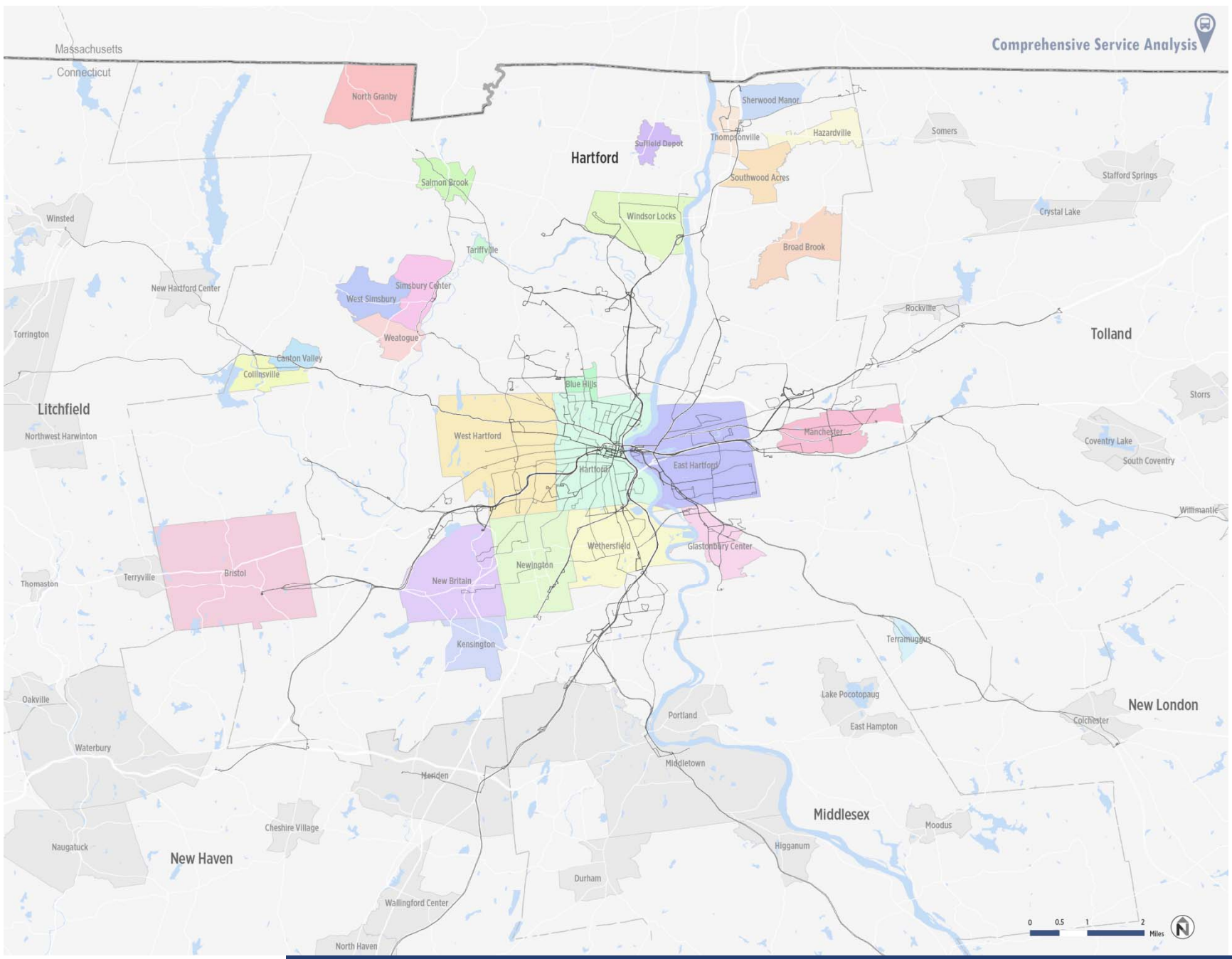
- Held one focus group with HYPE
- Three scheduled for next week:
  - Manchester Community College (scheduled for 11/12)
  - Employers
  - Hispanic Population (Parkville Library)

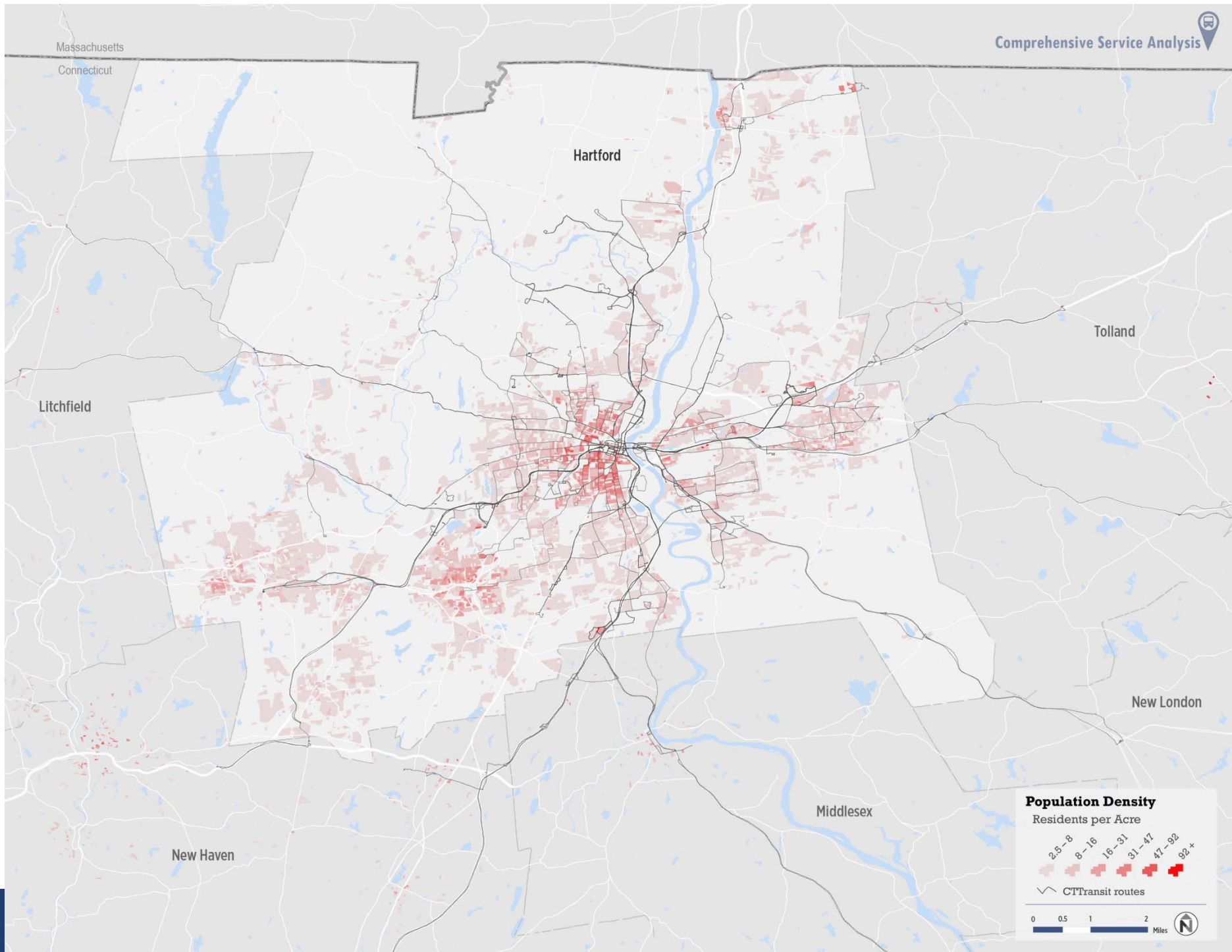


# Existing Conditions

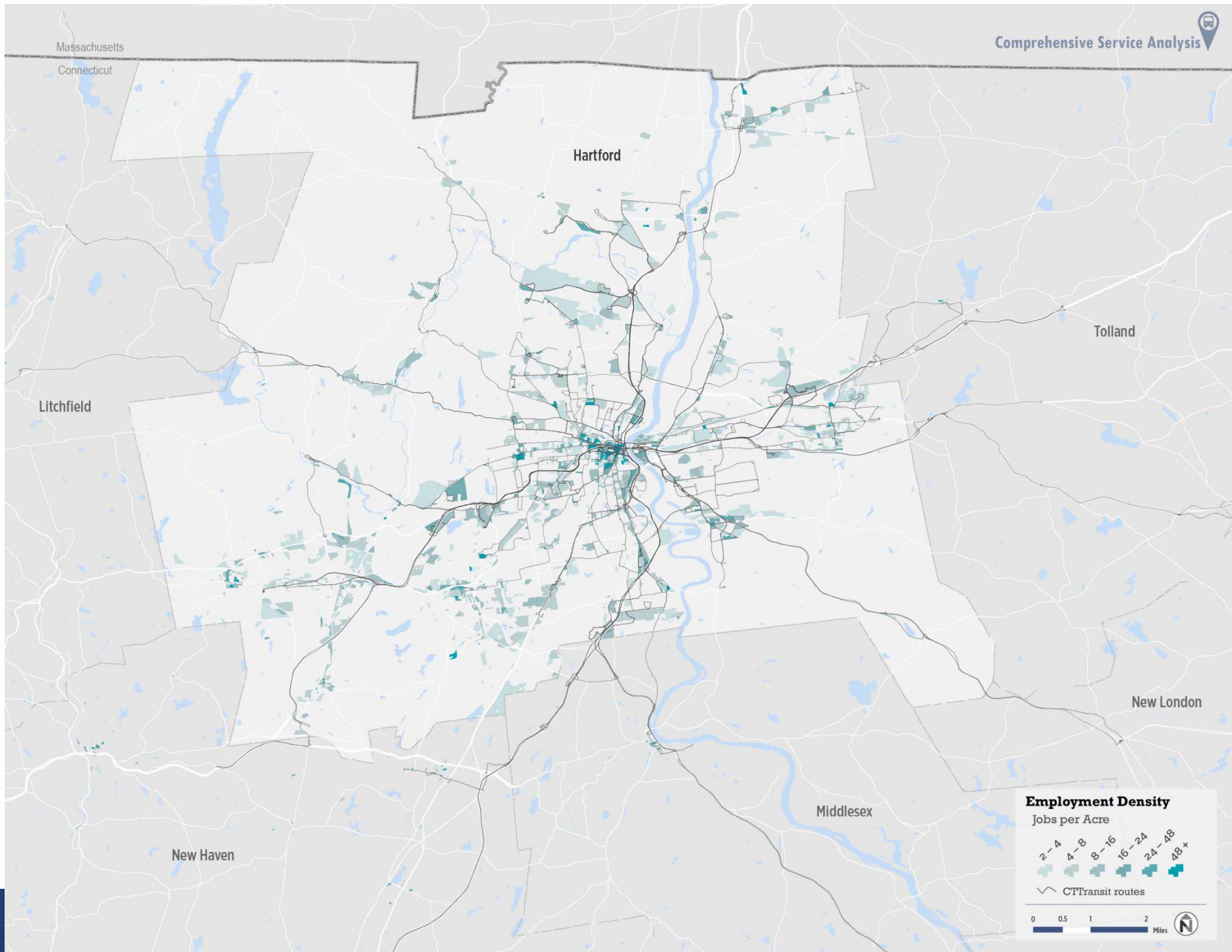
---

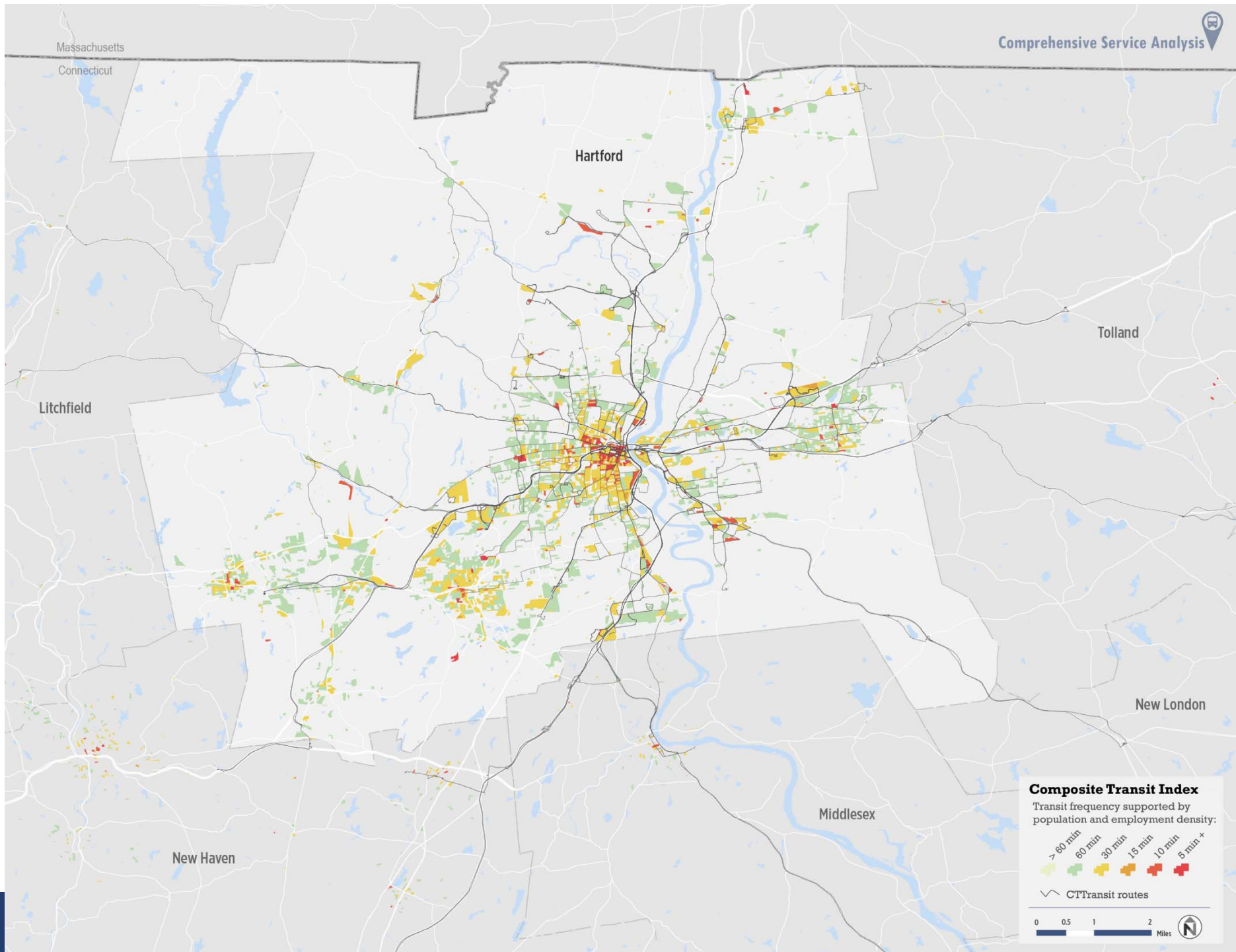
- **Review relevant studies**
- **Identify existing and future markets for transit**
- **Existing Conditions Memo**
  - CTTransit management structure
  - Service overview
  - Market analysis
  - Broad performance indicators
  - Review of relevant studies attached as appendix











Massachusetts

Connecticut

Hartford

Tolland

Litchfield

New London

New Haven

Middlesex

**Composite Transit Index**

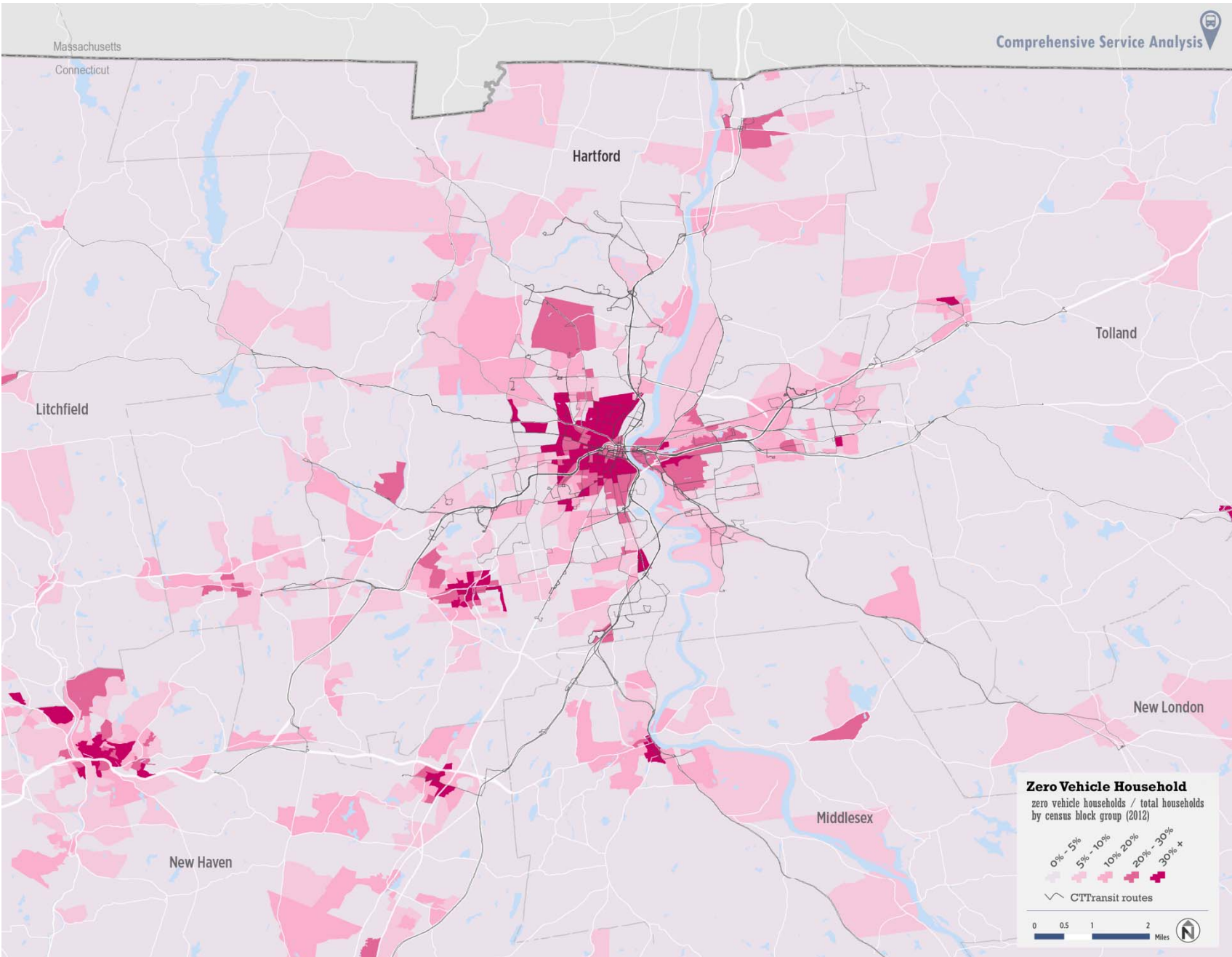
Transit frequency supported by population and employment density:

- > 60 min
- 60 min
- 30 min
- 15 min
- 10 min
- 5 min+






 CT Transit routes


0 0.5 1 2 Miles 



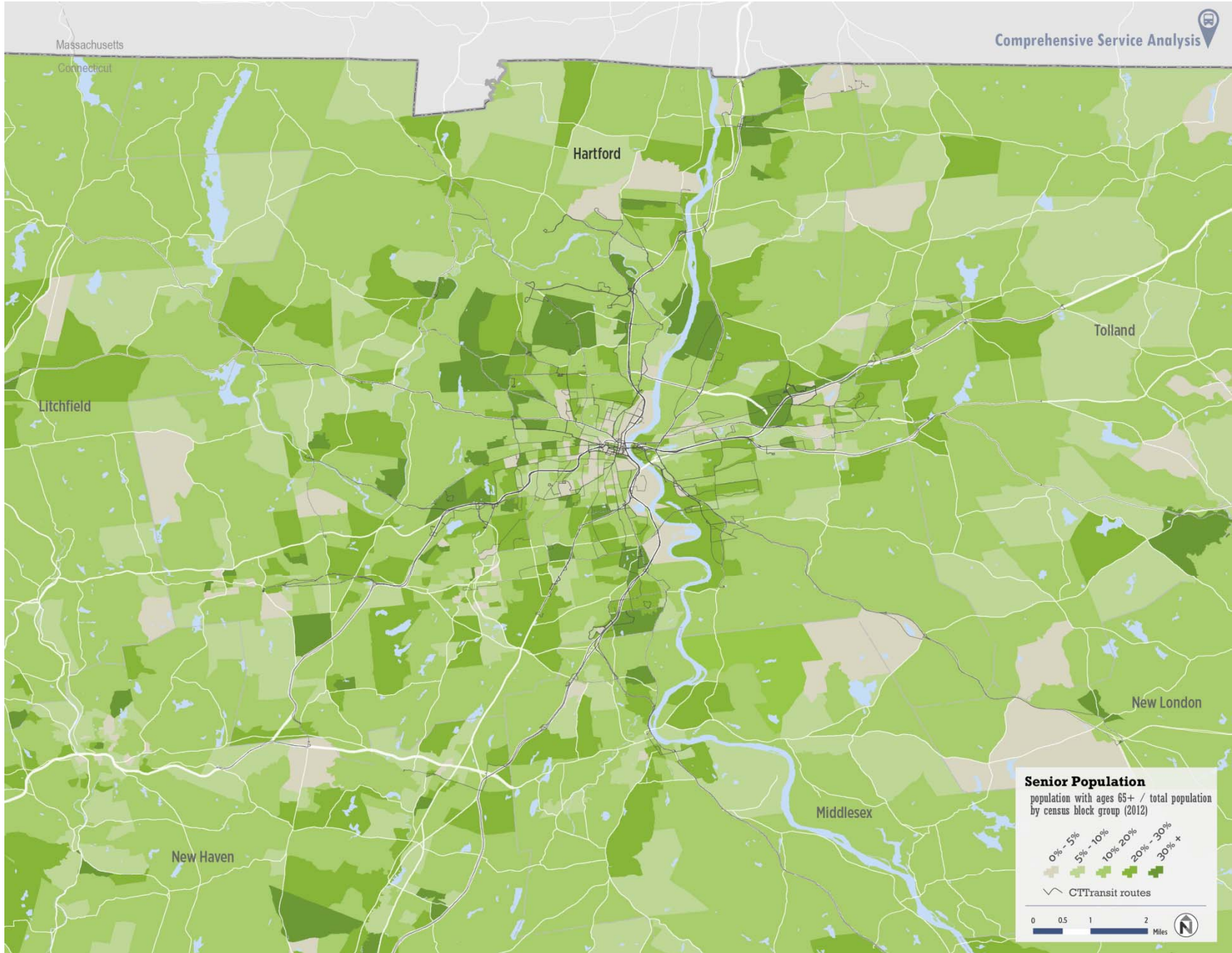


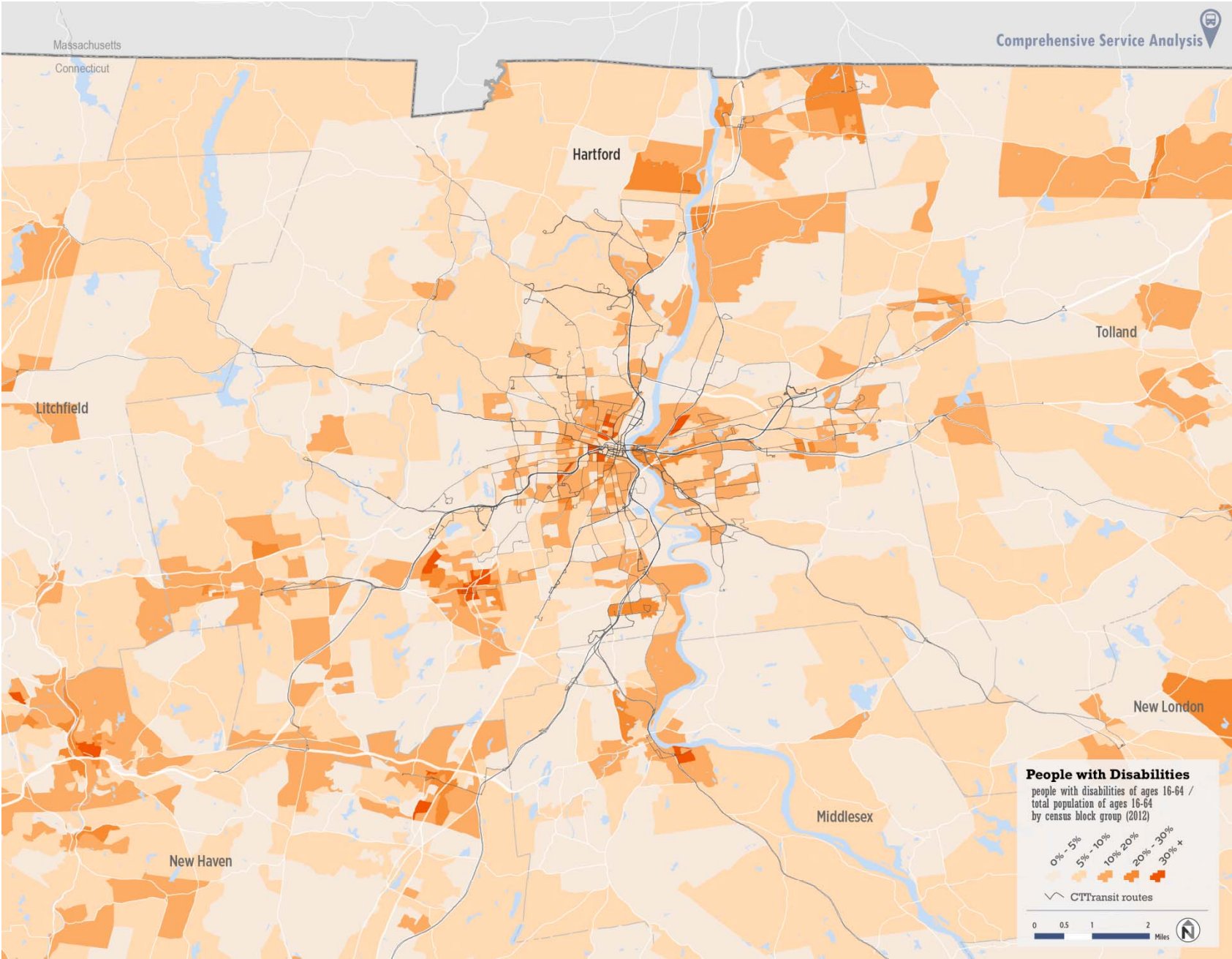
**Zero Vehicle Household**  
zero vehicle households / total households  
by census block group (2012)

	0% - 5%
	5% - 10%
	10% - 20%
	20% - 30%
	30% +

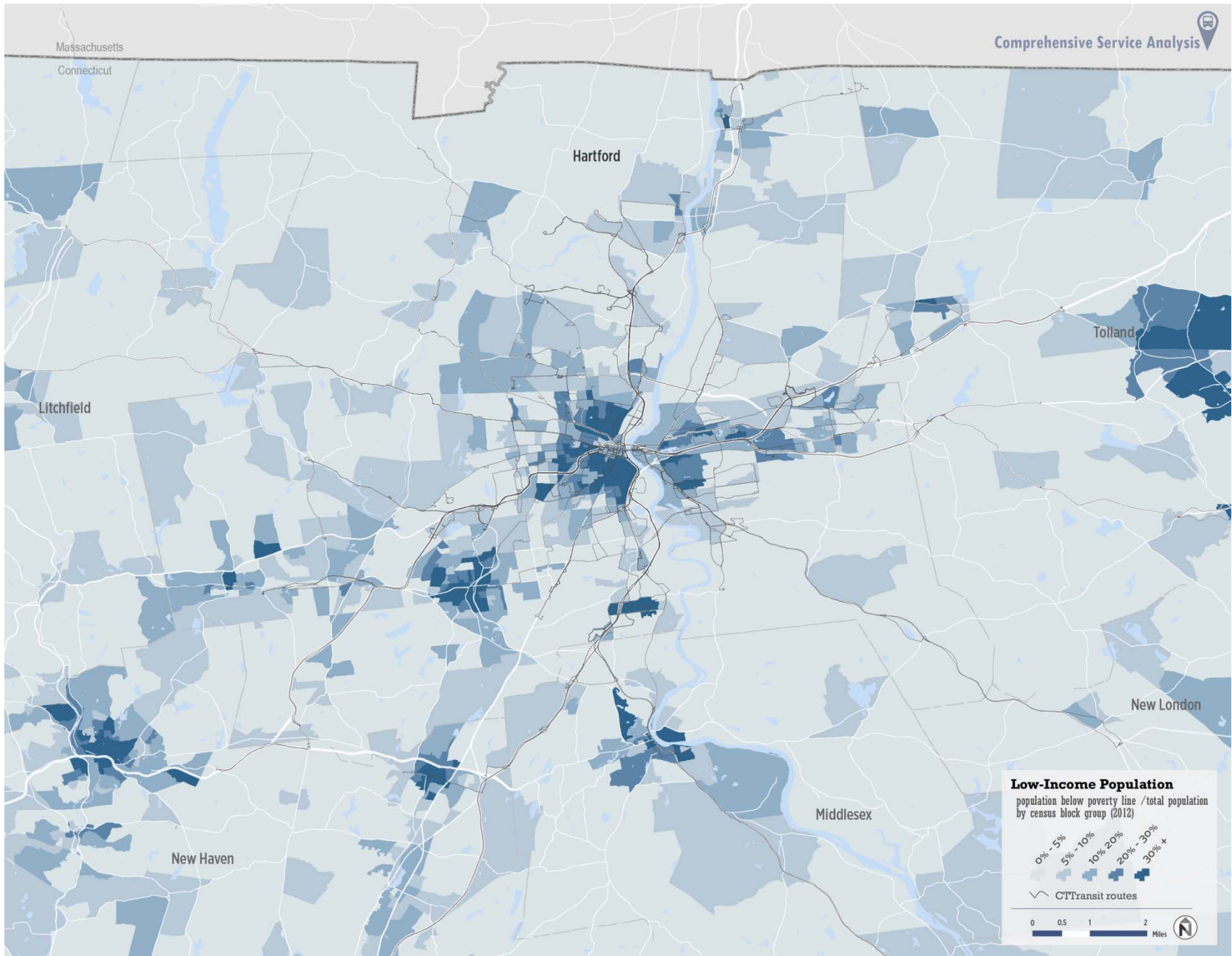
 CTTransit routes



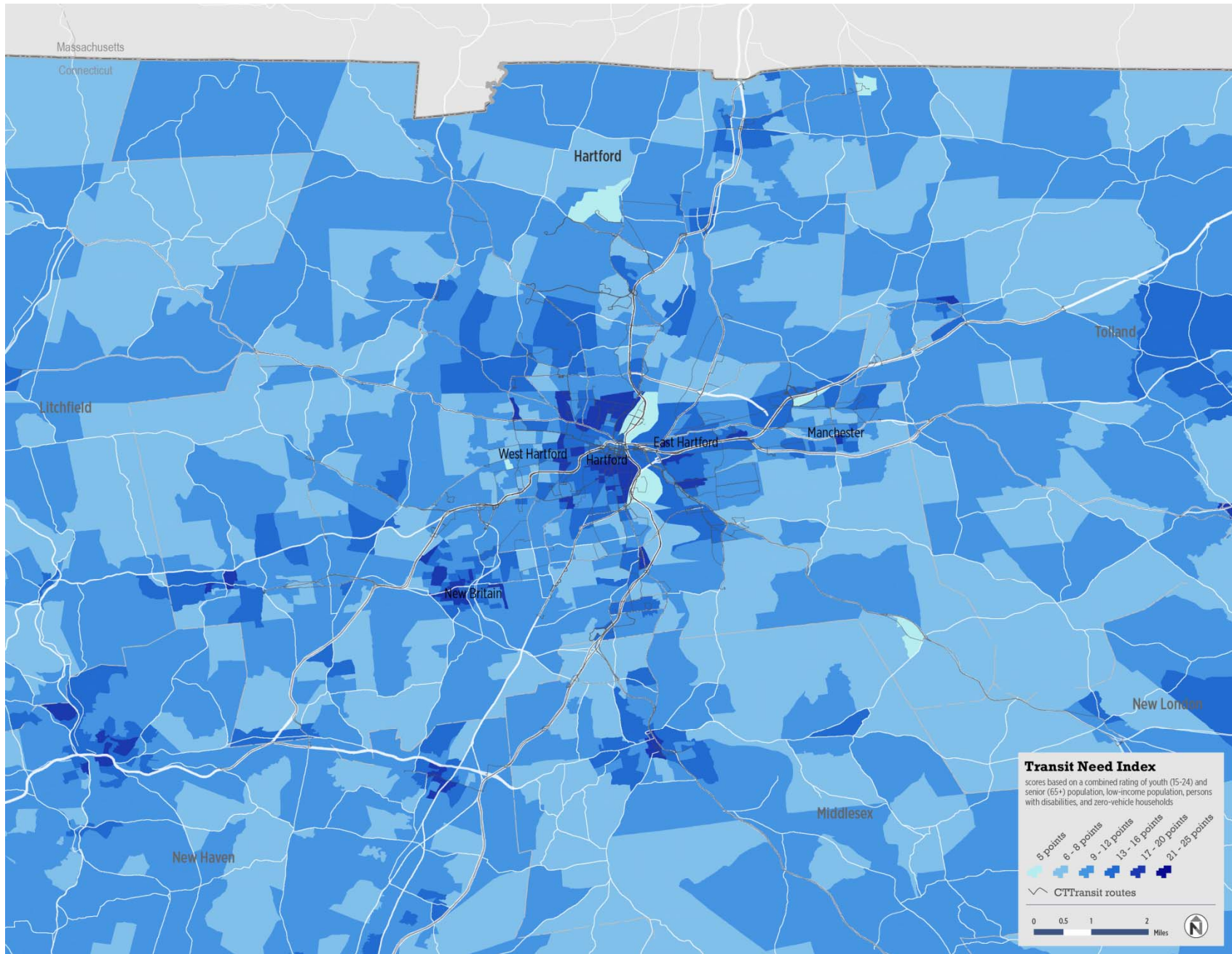






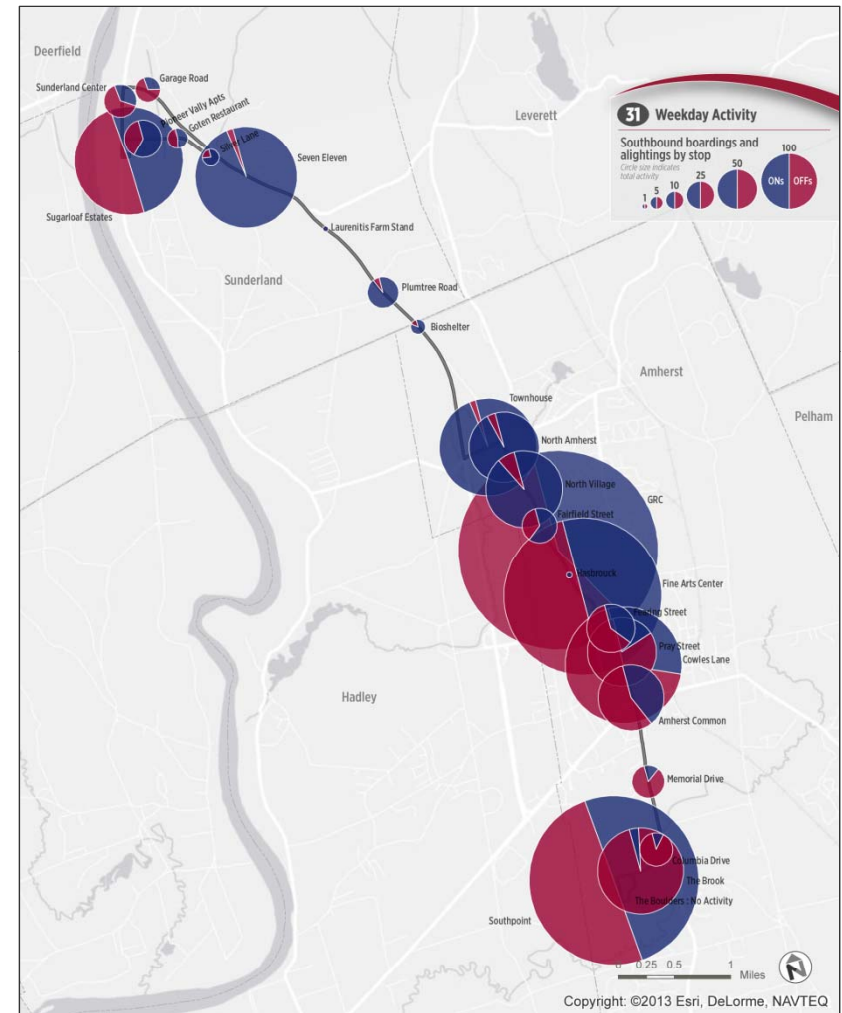






# Route Evaluation

- **Route Evaluation**
  - Sample profile available
  - Comment



# Manchester Buckland Hills Park and Ride Lot

---

- **Waiting to hear from URS**





# Next Steps

# Next Steps

---

- **Final Existing Conditions Memo**
- **Complete Stakeholder Outreach**
  - Draft report by end of the year
- **Route evaluation**
  - Ongoing data processing and analysis
  - Start to produce individual route evaluations
  - Organize by subarea and review with local stakeholders
- **Next Advisory Committee Meeting – January 2015?**



**Bethany Whitaker**  
47 Maple Street, Suite 200  
Burlington, VT 05401  
(802) 922-9760  
[bwhitaker@nelsonnygaard.com](mailto:bwhitaker@nelsonnygaard.com)